

SIKORA EXTRA

Your magazine for Hose & Tube, Pipe | Sheets



SIKORA



The CENTERWAVE 6000 explained

04

50 years SIKORA!

09



Dear readers,

In 2023, SIKORA celebrates a milestone anniversary. We are pleased that we have been supporting our customers with our measuring and control technologies for 50 years, and that we set new standards for the tube and hose industry together with you. For the anniversary, we have developed a logo that captures the spirit of the anniversary while combining pride in achievements and a forward-looking attitude. Find out more in this issue!

In addition, we will show you why the CENTERWAVE 6000 is the first choice for quality control of plastic pipes. Furthermore, you will learn why HÖHLE relies on the X-RAY 6000 PRO as well as on our lump detector LUMP 2000 for the production of microducts.

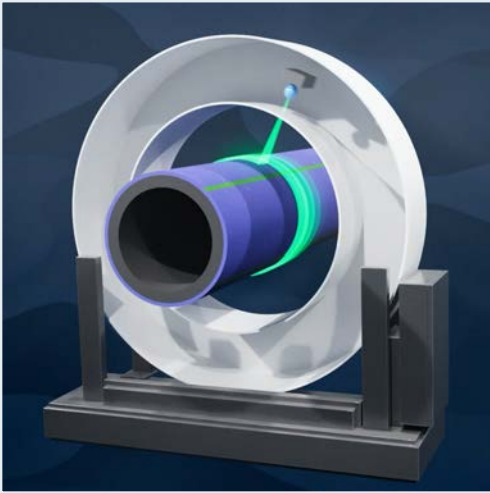
Furthermore, we would like to take the opportunity to present our recently developed mission statement. You can look forward to these and other topics.

I hope you enjoy reading this issue!

Sincerely yours,

Dr. Christian Frank
CEO SIKORA AG

CONTENT



04 – The CENTERWAVE 6000 explained



06 – HÖHLE uses SIKORA's X-ray measuring systems



08 – SIKORA's European Service Hub



09 – 50 years SIKORA!



10 – Mission statement: We are SIKORA

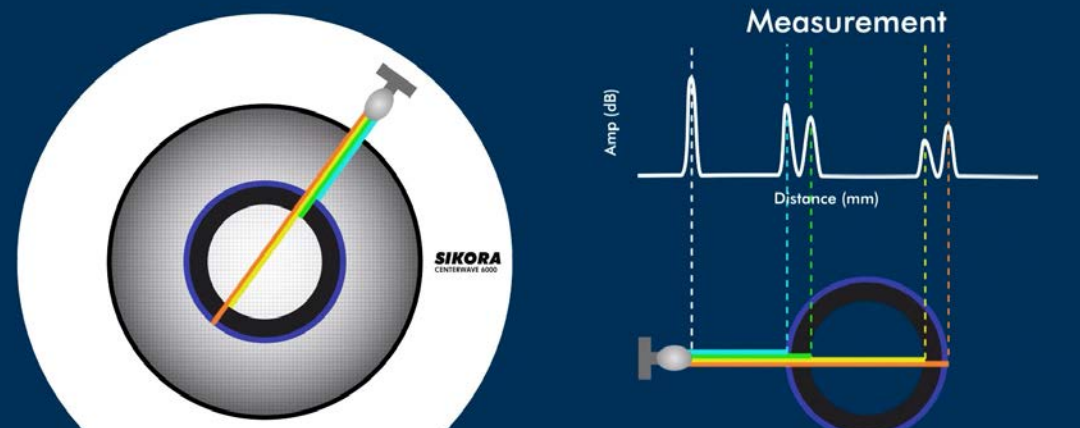


11 – Raffle

MEASURING ALL PIPE DIMENSIONS AND CONTROLLING THE MINIMUM WALL THICKNESS

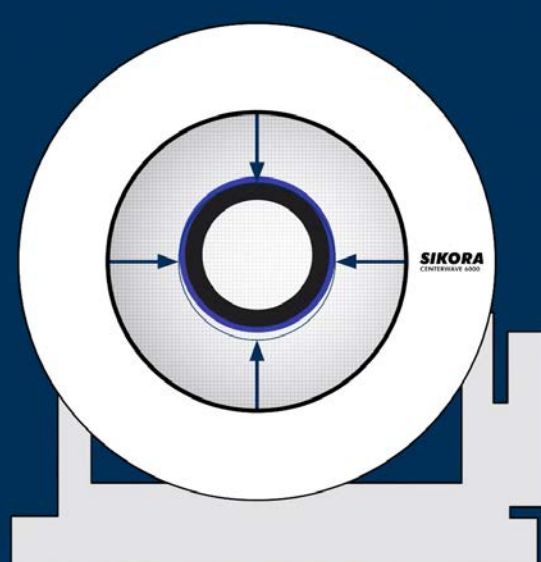
The CENTERWAVE 6000 explained

With its 360-degree dimensional measurement of plastic pipes, the CENTERWAVE 6000 has long been an industrial standard. But how exactly does the system work and what are its advantages?

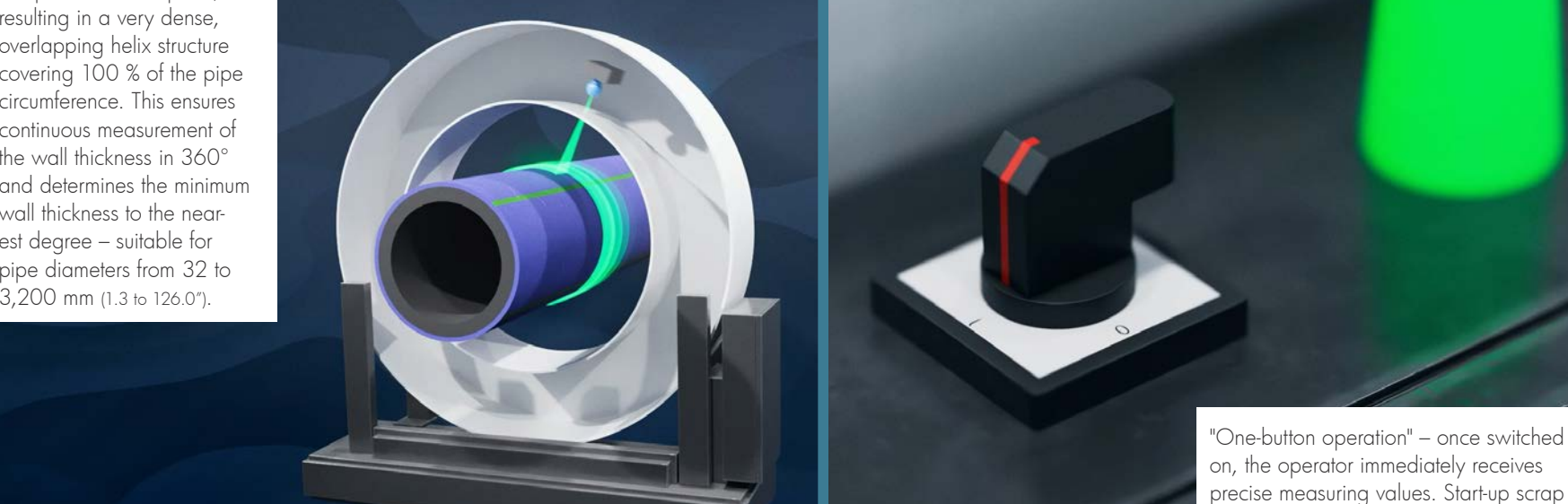


The measuring system based on radar technology is equipped with a continuously rotating transceiver. The evaluation of the time and amplitude of the radar signal enables the exact determination of all dimensions of the pipe including the wall thickness.


The rotation of the transceiver adapts to the line speed, resulting in a very dense, overlapping helix structure covering 100 % of the pipe circumference. This ensures continuous measurement of the wall thickness in 360° and determines the minimum wall thickness to the nearest degree – suitable for pipe diameters from 32 to 3,200 mm (1.3 to 126.0").



The measuring system features permanent automatic centering, which continuously centers the measuring head to the tube, ensuring accurate measurement results.



"One-button operation" – once switched on, the operator immediately receives precise measuring values. Start-up scrap and unnecessary material consumption can thus be avoided.



Immediately after the first vacuum tank, a dynamic shrinkage prediction can be made. The CENTERWAVE 6000 precisely determines all expected final pipe dimensions expected at the end of the extrusion line. It acts as a virtual gauge head, showing not only what the pipe will be like at the hot position, but also how it will have cooled down.

The supplied ECOCONTROL 6000 display and control system with trend, statistics and logging function provides comprehensive documentation of all measurement information. The measuring data obtained enables automatic control of the minimum wall thickness (Smin), taking into account the standard deviation of the extrusion line. This allows potential savings to be exploited to the maximum. Optimum material utilization and sustainable production are guaranteed.

“YOU GET A MEASUREMENT YOU TRUST”

HÖHLE uses SIKORA's X-ray measuring systems for inline quality control of microducts

F. I.: Toomas Koobas, CEO, and Marko Hoolma, Production Manager, at HÖHLE's Microduct production facility in Estonia.

HÖHLE is a manufacturer of first-class microducts that are used for building fiber-optical networks to house optical fiber cables as a protective channel. Located in Estonia, the company uses SIKORA X-ray measuring systems in its plant for quality control during the extrusion of microducts.

The cooperation between both companies is based on their mutual commitment to deliver high quality products to fulfil the customer demands.

Known for short lead times and flexible services to its customers, HÖHLE puts high emphasis on the quality of the microducts they produce.

Thus, they only use pure raw material of the highest quality and have also included continuous online measuring and control systems in the manufacturing process.

For measuring the inner and outer diameter, wall thickness and eccentricity of the microducts the company has installed three X-ray based X-RAY 6000

key factor when talking about quality. This can be achieved with SIKORA devices.”

HÖHLE uniquely uses three separate monitors of the ECOCONTROL 6000 processor system connected to each X-ray device. These allow the operators to have constantly access to the current measuring values. The real-time visualization is the secret of a perfect process control. Compared to alternative technologies for quality control such as ultrasound, X-ray technology provides consistent measuring values without being affected by temperatures, or material. There is no need for coupling media and there is no calibration required. “With X-ray you get a measurement you trust and a guarantee of compliance with microduct specifications,” says Koobas.

For utmost quality control HÖHLE also uses SIKORA lump detectors in their lines. These systems detect the smallest non-conformities on the microducts surface. The operator receives immediate information in case of a fault and can take necessary actions. The combination of X-ray measuring systems and lump detection during the manufacturing process ensure the highest microduct quality for highest customer satisfaction.



For utmost quality control HÖHLE includes the LUMP 2000 for lump and neckdown detection in the microduct extrusion lines

PRO devices from SIKORA in their lines to measure microducts within diameter ranges between 3 and 20 mm (.118 and .787”). “The advantage of the X-RAY systems is that you are confident about the measured values and you get correct product dimensions immediately with the start-up of the line with 'one shot',” explains Toomas Koobas, CEO at HÖHLE, and adds, “For microduct production, continuous inline monitoring is the



HÖHLE uses the X-RAY 6000 PRO for dimension measurement during the production of microducts

SIKORA
Technology To Perfection



X-RAY 6000 PRO – 360° measurement of hoses & tubes

- Measuring ranges from Ø 0.65 to 270 mm (.026 to 10.6”)
- Min. wall thickness > 0.3 mm (.011”)
- Up to three different layers
- Automatic control of each layer to minimum wall thickness
- “One Button Operation” – no calibration, no material parameters
- Continuous quality monitoring and documentation

A POWERFUL TEAM – SIKORA'S EUROPEAN SERVICE HUB

Teamwork for SIKORA customers in Europe

Breaking down barriers, opening doors and flexibly responding to customer requirements – these are the cornerstones of the SIKORA European Service Hub. Since the beginning of the year, Service Technicians from Germany, France, Italy, Poland and Turkey have been working even closer together to flexibly offer the best possible customer service.

New technologies and constantly growing market demands are constant companions of everyday life at SIKORA. While the company started 50 years ago with only one device, today's product portfolio includes a variety of devices and especially technologies. Whether X-ray, optics, laser or millimeter waves – SIKORA offers the needed technology for quality control during production for every customer.

In order to provide each customer with a qualified Service Technician for upcoming tasks, SIKORA has established the European Service Hub. Since this year, Service Technicians from the Bremen headquarters (SAG) as well as the subsidiaries SIKORA FRANCE (SFR), SIKORA

ITALIA (SIT), SIKORA POLAND (SPL) and SIKORA TURKEY (STU) are deployed throughout Europe.

Among other things, Service Technicians from Turkey, France and Germany have been able to jointly carry out a maintenance program for several PURITY SCANNER ADVANCED units at one location. A Service Technician from the Turkish subsidiary was able to successfully support customers in Germany and Belgium, and further Europe-wide orders are planned. This creates greater efficiency in customer service, for example, to enable shorter response times.

Another advantage is that the joint assignments of the international Service Technicians will result in an even more intensive exchange of knowledge. This means that customers receive the best possible service with competent technical expertise.



SIKORA CELEBRATES 50TH ANNIVERSARY

Half a century of innovations

SIKORA proudly looks back on its company history as it celebrates its 50th anniversary this year. Since 1973, the company has been developing and producing innovative measuring and control technology to increase its customers' productivity. Ideas, passion and a pioneering approach are the mainstays of the company's success. This anniversary honors the achievements of the past and is a milestone to the future.

Within 50 years, the one-man operation has grown into a globally active manufacturer and supplier of measurement, control and inspection technologies. The 350 employees in Bremen and the 15 international subsidiaries support customers worldwide with innovative solutions and service. "I am very proud and humbled by how the company has developed over the 50 years," says Harald Sikora. He adds: "Then as now, the secret of SIKORA's success is characterized by innovations that always keep the customer one step ahead in the market; our passion for the products and the consistent focus of all activities are on the customers."



Harald Sikora,
company founder and
Managing Director of
SIKORA HOLDING
GmbH & Co. KG



Dr. Christian Frank,
CEO SIKORA AG

SIKORA does not reside in its past, but has ambitious future plans. "We look with pride at our past, at 50 years of measuring technology at SIKORA," says Dr. Christian Frank, CEO at SIKORA. "The 50 years are an absolute success story written by our employees. I have great respect for this team achievement and am very proud to be a part of it. It is our claim to offer innovative solutions for our customers today and in the future. This includes further developments of existing products as well as new technologies that meet the diverse requirements of customers, such as in the areas of digitalization, circular economy and electrification. We also want to meet the demand for technical solutions for quality control from a single source and further develop our portfolio in this respect," says Frank. The close partnership with the customers is also essential for Frank in the future:

"We thank our customers for the trust in the last 5 decades and look forward to the further cooperation in the next 50 years. We, the SIKORA team, still have a lot of plans."

The SIKORA anniversary logo



"For the anniversary, SIKORA developed a logo that captures the spirit of the anniversary while combining pride in achievements and a forward-looking attitude," says Katja Giersch, Head of Corporate Communications at SIKORA. Circular shapes evoke associations with cross-sections of cables, tubes and layers as well as pellets. At the same time, they symbolize a cross-section of the dynamic company history with many highlights marked by dots. The color magenta complements the typical SIKORA blue and cyan and gives the look a fresh modernity. "Three simple words sum up what SIKORA is celebrating: 50 years of groundbreaking ideas, the passion and commitment of the SIKORA team and the focus on a successful future," says Giersch.

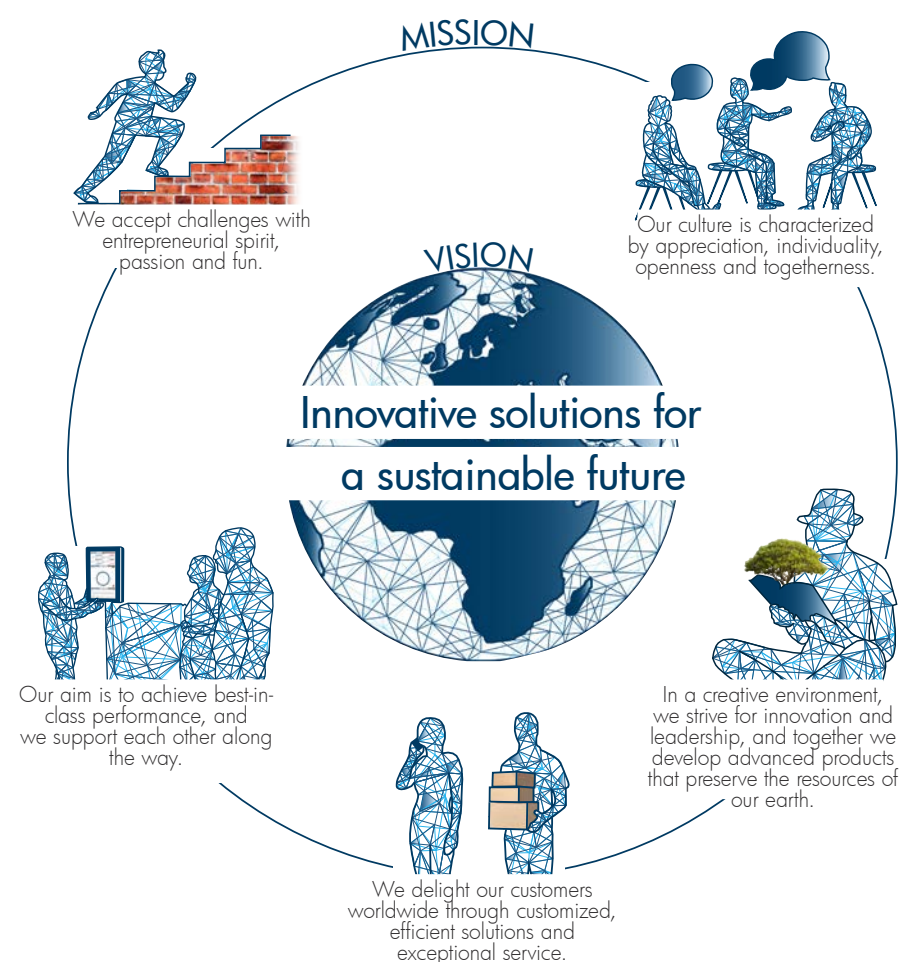
SIKORA MISSION STATEMENT – WE ARE SIKORA

Who are we and what do we do; where do we want to go, and how do we do it?

The SIKORA corporate culture is unique and deeply rooted in history. Over many years, we have developed a very special culture, which we have written down in the "SIKORA Mission Statement". It forms the foundation on which everything is built and which helps us to achieve our goals.

The SIKORA mission statement includes four supporting pillars to shape the future:

1. The vision defines what SIKORA as a company wants to do and be in the future.
2. The mission describes how SIKORA wants to achieve the vision.



At SIKORA, we understand our mission statement as a compass for the company. It serves employees and customers at the same time as orientation and offers the answers to the questions: Who are we? What do we do? Where do we want to go? How do we do it?

Long-term planning and strategic orientation can also be derived from a mission statement. At the same time, it sets limits and guard rails to keep the company on the desired path for the future.

3. The corporate values provide reliable guidelines for daily conduct and guide decisions across all areas of the company.
4. The leadership principles reflect the principles of leadership work, how relationships and cooperation are shaped and how decisions are made.

Thus, SIKORA creates an environment for best possible results and ensures the long-term success of our company and our customers.

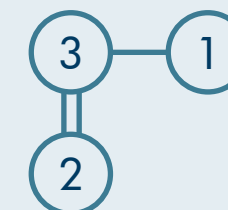
RAFFLE



Hashiwokakero

Connect the individual numbers with a single or double line(s). The lines may only be drawn horizontally or vertically. The height of the number indicates how many lines must touch the number circle.

Example:



To participate, email us a picture of your solution by June 30, 2023 to: extra@sikora.net

The prize is one of three electric beverage warmers.



Your contact details will not be passed on to third parties. Each entry takes part in the raffle. SIKORA employees and their relatives are unfortunately not allowed to participate. Each person can only participate once. We will evaluate the first e-mail, all following e-mails will be considered invalid. The legal process is excluded.

GOOD LUCK!

NEXT EVENTS



- Plastics Recycling Show Europe 2023 | May 10-11, 2023 | Rai, Amsterdam, Netherlands



- PLASTPOL | May 23-26, 2023 | Kielce, Poland



- Compounding World Expo | June 14-15, 2023 | Essen, Germany

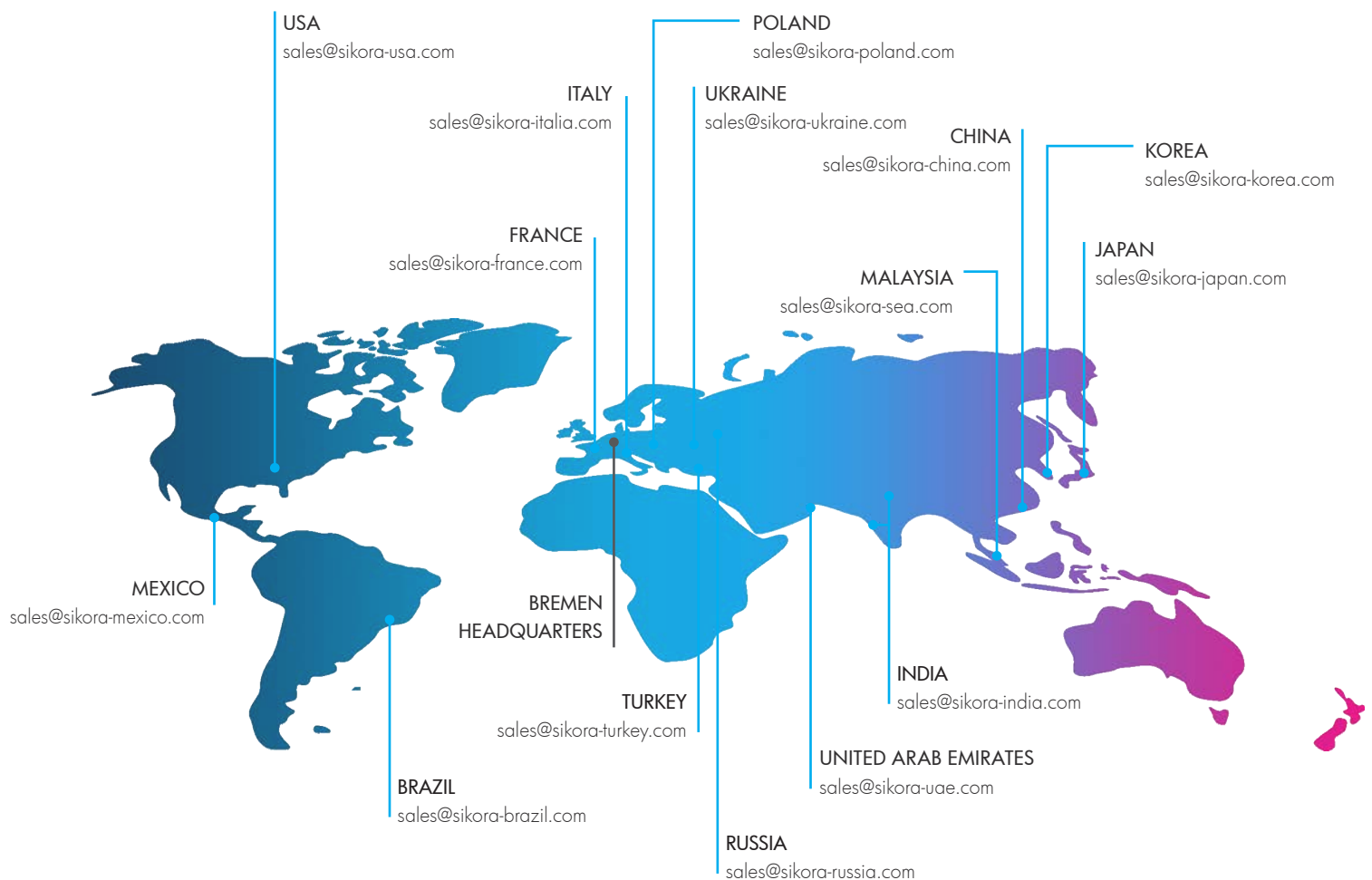
Stay informed

Don't want to miss out on the EXTRA's informative articles? Subscribe today at extra@sikora.net and you will receive the SIKORA magazine conveniently by e-mail.

SIKORA

Technology To Perfection

SIKORA AG
Bruchweide 2, 28307 Bremen
Germany
Phone: +49 421 48900 0
www.sikora.net, sales@sikora.net



Publisher
SIKORA AG, BREMEN

Editor's office
SIKORA AG, Bruchweide 2, 28307 Bremen, Germany
Phone: +49 421 48900 0
communications@sikora.net, www.sikora.net



<https://www.instagram.com/sikoranet>



www.twitter.com/sikoranet



www.linkedin.com/company/sikora-ag



www.youtube.com/sikoraag