

SIKORA EXTRA

Your magazine for Hose, Tube, & Pipe |
Sheet & Board

SIKORA and ConPro – Measuring technology
meets gravimetric weighing

04

Discover the PLANOWAVE 6000

08



Dear customers and business partners,

2024 is drawing to a close. In our last issue this year, we are once again providing you with news from the world of quality control and process optimization in the hose, tube and pipe industry.

We are pleased to have gained an experienced partner in the field of gravimetry with ConPro. Find out more about our new cooperation in this issue. We also report on why the pipe manufacturer Thai-Asia P.E. Pipe relies on the CENTERWAVE 6000 for quality control.

Dr. Christian Frank
CEO SIKORA AG



We also inform about the PLANOWAVE 6000, a non-contact inline measuring system for measuring the thickness and density of plastic sheets. Find out about recent developments in our services.

We wish you a pleasant end to the year and all the best for the coming year.

Enjoy reading!

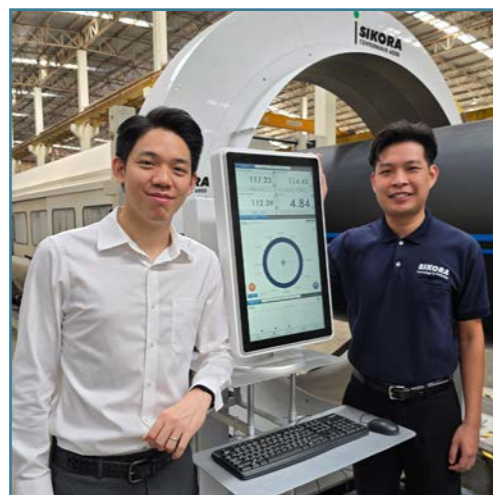
Sincerely,

Holger Lieder
Executive Board SIKORA AG

CONTENT



04 – Measuring technology meets gravimetric weighing



06 – Success Story – Thai-Asia P.E. Pipe uses SIKORA's CENTERWAVE 6000



08 – Discover the PLANOWAVE 6000



10 – Further development of SIKORA services



11 – Raffle

MEASURING TECHNOLOGY MEETS GRAVIMETRIC WEIGHING

SIKORA and ConPro enter into partnership

Benefit from our new partnership

Would you like to further increase the efficiency and quality of your tube and pipe production? Then we have the right solution for you! Under the slogan 'Measuring Technology meets Gravimetric Weighing', we have entered into a partnership with the gravimetric manufacturer ConPro, from which you will benefit directly.

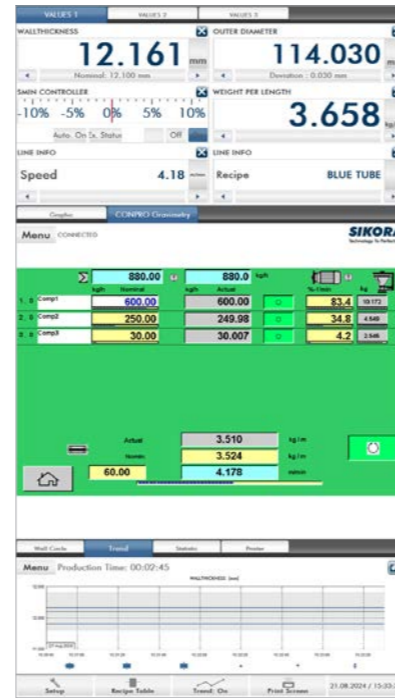
How integration works

Combine your SIKORA measuring system with a gravimetric system from ConPro. The integration of both systems is made possible by a new interface developed by our experts. This is based on the latest industrial communication standards and ensures seamless communication between the SIKORA dimensional measuring device and the ConPro gravimetric system. During production, the measured tube or pipe parameters such as diameter, 360° wall thickness distribution, and ovality are continuously compared by the SIKORA measuring system. Additionally, the weight per meter can be quickly adjusted in real time with the gravimetric system, allowing for precise control of the minimum wall thickness, maximum material savings, and guaranteed compliance with the product specification.

Clear visualization

The graphical integration of ConPro gravimetry into the SIKORA ECOCONTROL 6000 user interface enables very simple and intuitive operation. Both systems work in real time, which enables an immediate reaction to process deviations. In extrusion lines with existing ConPro gravimetry and new lines, the SIKORA measuring device can be connected directly to the ConPro gravimetry via the new interface without having to go through an extruder control.

For more information, please contact our Sales team by phone at +49 421 48 900 0 or by email at sales@sikora.net.



First presented at CWE in Brussels. In the picture, from left to right: Dieter Büsching, Technical Manager at ConPro, and Christian Schalich, Head of Sales – Hose & Tube SIKORA AG

YOUR ADVANTAGES AT A GLANCE

- Combination of SIKORA dimensional measuring system with the ConPro gravimetry
- Intelligent interface based on the latest industrial communication standards for continuous data exchange
- Control of the minimum wall thickness for

- highest tube or pipe quality, as well as material and cost savings
- Integration of ConPro gravimetry with a SIKORA measuring system in existing or new lines
- Intuitive display and control of the tube parameters on the SIKORA ECOCONTROL 6000 or (optionally) on machine operating panels



“THE SYSTEM IS ABLE TO MEASURE LARGE PRODUCT SIZES UP TO 1,600 MM”

Thai-Asia P.E. Pipe uses SIKORA’s CENTERWAVE 6000 for measuring HDPE pipes during extrusion

Thai-Asia P.E. Pipe with its headquarters in Nakhonratchasima, Thailand, is a specialist in manufacturing HDPE pipes, fittings, corrugated pipes and microducts. Since its foundation in 1984, domestic customers and beyond have been relying on its high-quality products. These are used for diverse applications such as water transmission, electrical conduit and communication cable as well as for special projects in the area of mining. As the only company in Thailand, Thai-Asia P.E. Pipe offers the largest HDPE pipes with a product diameter of up to 2,000 mm (78.739”). Therefore, it is no coincidence that the company uses SIKORA’s CENTERWAVE 6000 for quality control of pipes in its extrusion line.

For Thai-Asia P. E. the application of innovative measuring and control technology in pipe production is a matter of course. “During our 40-year company history the priority has always been on constantly delivering premium quality that our customers can rely on, says Nattabhumi Laosathirawong, factory manager at Thai-Asia P.E. Pipe. To meet these requirements, Thai-Asia P.E. Pipe selects the material, method of production and quality control from suppliers with highest standards. This also includes the CENTERWAVE 6000 from SIKORA, a system based on millimeter wave technology that continuously measures and monitors the diameter and wall thickness of pipes while they are manufactured. “A benefit of the system is that it is able to measure large product sizes up to 1,600 mm (62.992”) and wall thicknesses of more than 100 mm (3.937”). Here other devices have limitations,” explains Nattabhumi.

In the line, the CENTERWAVE 6000 is installed directly after the first vacuum tank. Already after 12 meters (472.439”) the system measures gapless over the entire pipe circumference the diameter and wall thickness in real-time. The measuring values are clearly visualized, which enables a fast centering of the extrusion tools. “An early reliable measurement is essential, considering that large pipes are being produced at a line speed of 0.06 meters per minute (2.36”),” says Nattabhumi. “The outer diameter of our pipes is up to 2 m (78.74”) and the wall thickness is more than 100 mm (3.937”). As the price of raw material is unstable and ever increasing, an optimized start-up process leads not only to time saving, it also improves pipe quality and saves material and costs during production. At the end this contributes to sustainable manufacturing and helps preserving the scarce resources on earth,” concludes Nattabhumi.

Thai-Asia P.E. Pipe uses the CENTERWAVE 6000 from SIKORA for continuous quality control of large pipes with wall thicknesses of more than 100 mm (3.937”). From left: Nattabhumi Laosathirawong, factory manager at Thai-Asia P.E. Pipe with Huan Soon Lee, Sales & Business Development Engineer at SIKORA SOUTHEAST ASIA

Another reason to include measuring equipment in the line is to ensure continuous quality control during pipe extrusion. Normally, for every standard pipe length, such as 6, 12 or more meters (236.22”, 472.44”), the end user can only measure the wall thickness at the beginning and at the end of the pipe. The CENTERWAVE 6000 supports Thai-Asia P.E. Pipe to measure continuously 100 % of the pipe during production, which is only possible with this kind of technology. It ensures a consistent quality control of every meter of the pipe produced, providing trend and statistics for every section, which can also be recorded and printed out. Finally, this gives maximum confidence and safety to the end user.

The cooperation between Thai-Asia P.E. Pipe and the Germany-based SIKORA AG is driven by the same high-quality standards for a continuous improvement process. The key to success roots in the requirements and trust from the customers. “We have the ambition to further convince our customers with our products,” tells Nattabhumi. This is to be achieved by innovation, continuous improvements, and the use of future-oriented technologies within the factory. “Partners like SIKORA with the CENTERWAVE 6000 for quality control support us on our path to always provide our customers the best pipes.”



Thai-Asia P.E. Pipe uses the CENTERWAVE 6000 from SIKORA for continuous quality control of large pipes with wall thicknesses of more than 100 mm (3.937”).

SIKORA SERVICE: FURTHER DEVELOPMENT FOR OUR CUSTOMERS

New concepts – consistently high quality

SIKORA devices and services have always stood for quality and reliability. Increasing technical requirements and a growing global team constantly pose new challenges. In order to offer all customers the best advice, the best service and consistent quality, SIKORA is continuously developing.

In the course of a comprehensive restructuring of the SIKORA service, many of the established services have been scrutinized in recent weeks and months. The aim of this measure is to proactively respond to increasing demands and to anticipate fluctuations in the world market. Specifically, this means, among other things, further expanding supply chains in order to counteract possible bottlenecks at an early stage. Intensive knowledge transfer in the handling of SIKORA devices – both in our own worldwide service network and with our customers. Modernized workflows as well as the optimization of our offer preparation in order to shorten reaction and lead times.

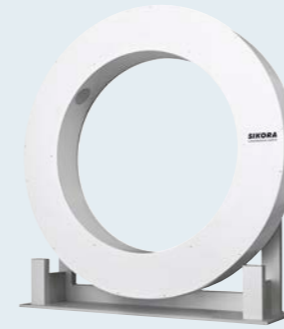
Challenges and solutions in the supply chain
Natural forces, political conflicts, lack of raw materials and many other reasons influence supply chains worldwide every day. SIKORA prevents limited availability of some (spare) parts with a complex stocking and purchasing strategy. Spare and wear parts are thus quickly available for all customers.

Expansion of the worldwide service network
The strong expansion of the worldwide SIKORA service network requires an intensive exchange of knowledge. Customers can continue to rely on the excellent training of all SIKORA service engineers and their access to the broad expertise of all international colleagues. The transfer of knowledge in the daily handling of SIKORA devices in the production facilities has been modernized. Customers can look forward to a wide range of training opportunities – read more about this in the upcoming SIKORA EXTRA edition.

Introduction of the SIKORA flat-rate repair
With the introduction of the SIKORA flat-rate repair, the processing time could be significantly reduced. Customers who want to send a device for repair, now receive an offer in only 1-2 days and can quickly and informed decide whether a repair or a new device is more suitable. This provides fast availability and planning security.

Outlook
Of course, all services will continue to be regularly reviewed and new areas developed. Our customers can be sure that their needs will remain our focus in the future and that they can rely on the highest quality.

RAFFLE



CENTERWAVE 6000

1 _____
2 _____
3 _____



X-RAY 6000 PRO

1 _____
2 _____
3 _____

At SIKORA's production

Match these terms and components with the corresponding SIKORA devices:

- Millimeter waves
- X-ray tube
- Large pipe
- Transceiver
- Multilayer measurement
- Wall thickness

Send your solution by January 31, 2025, to: extra@sikora.net

Win one of three daylight alarm clocks/bedside lamps with inductive charging station.



Your contact details will not be passed on to third parties. Every entry will be entered into the prize draw. Unfortunately, SIKORA employees and their relatives may not take part. Each person can only enter once. We will evaluate the first e-mail, all subsequent e-mails will be considered invalid. Legal recourse is excluded.

GOOD LUCK!

NEXT EVENTS

ArabPlast • ArabPlast | Jan 7-9 | Dubai, UAE

PLÁSTICO BRASIL • Plástico Brasil | Mar 24-28 | São Paulo, Brazil
FEIRA INTERNACIONAL DO PLÁSTICO

Chinaplas • Chinaplas | Apr 15-18 | Shenzhen, China

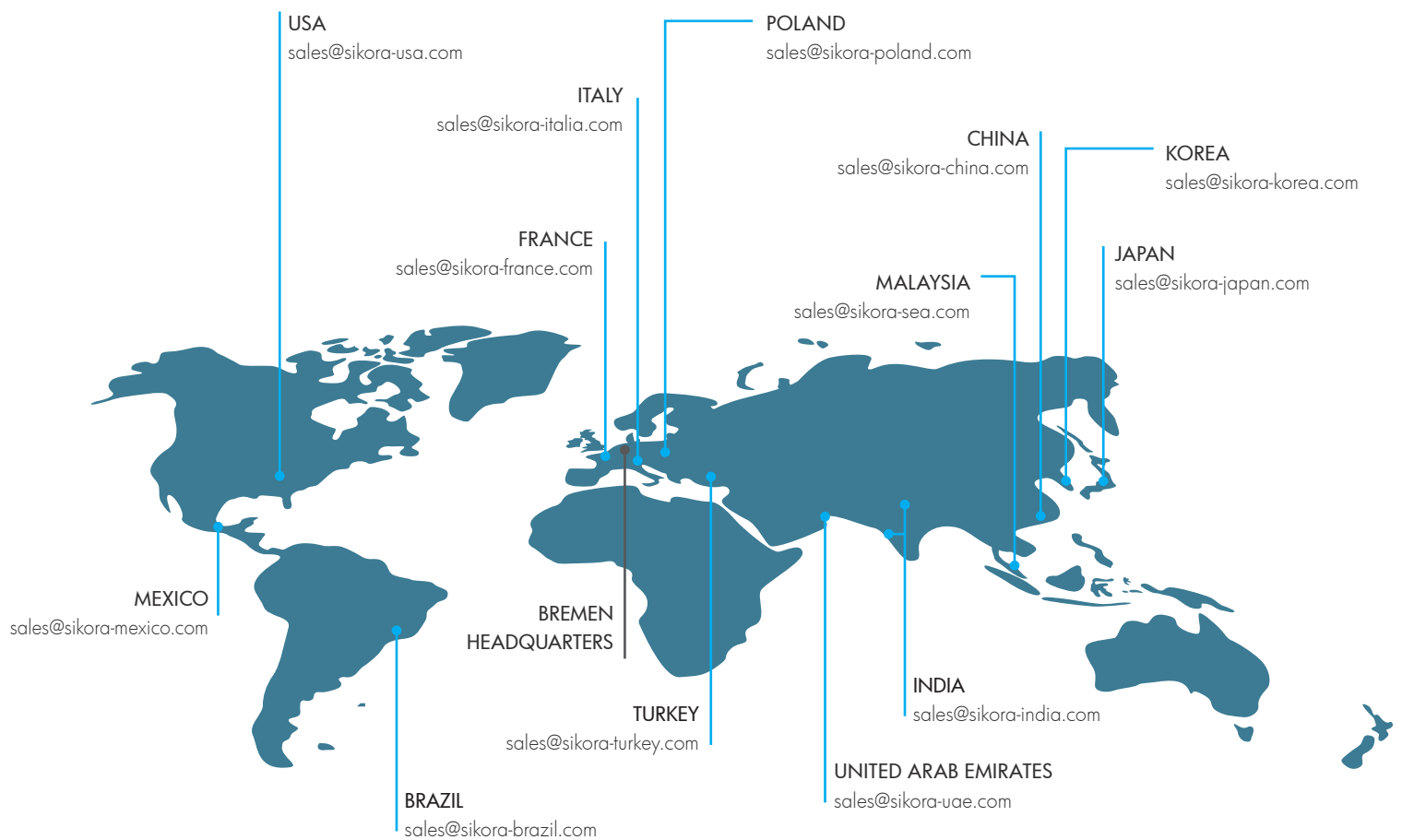
Stay informed

Don't want to miss out on the EXTRA's informative articles? Subscribe today at extra@sikora.net and you will receive the SIKORA magazine conveniently by e-mail.

SIKORA

Technology To Perfection

SIKORA AG
Bruchweide 2, 28307 Bremen
Germany
Phone: +49 421 48900 0
www.sikora.net, sales@sikora.net



Imprint:
SIKORA AG, BREMEN

Editor's office
SIKORA AG, Bruchweide 2, 28307 Bremen, Germany
Phone: +49 421 48900 0
communications@sikora.net, www.sikora.net



<https://www.instagram.com/sikoranet>



<https://x.com/sikoranet>



www.linkedin.com/company/sikora-ag



www.youtube.com/sikoraag