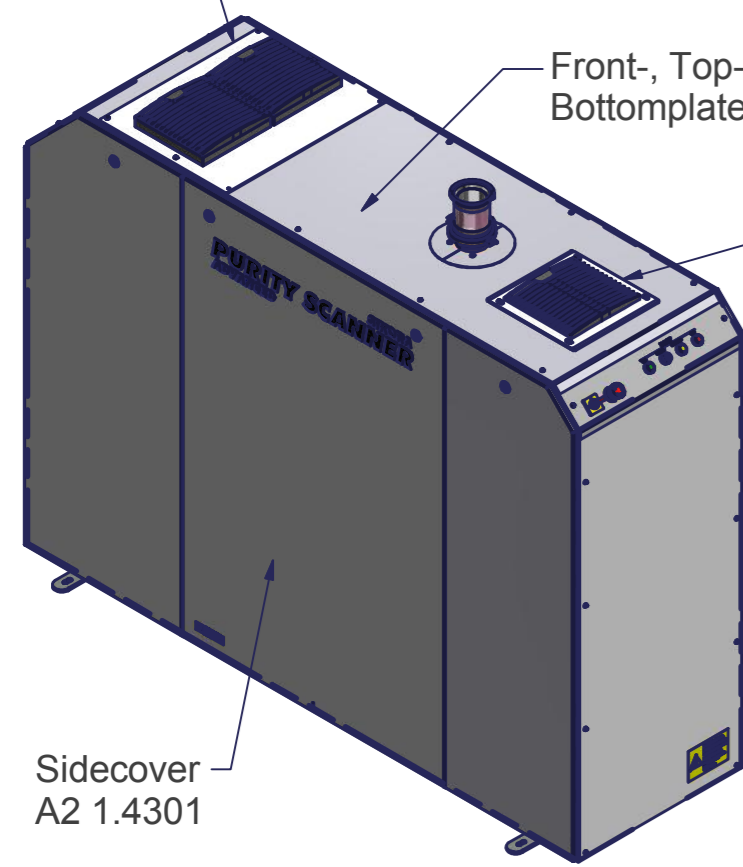


Torsion angle for the supporting feet 360°

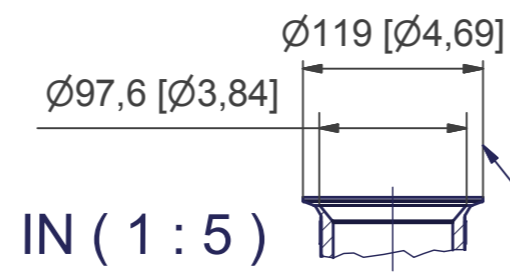
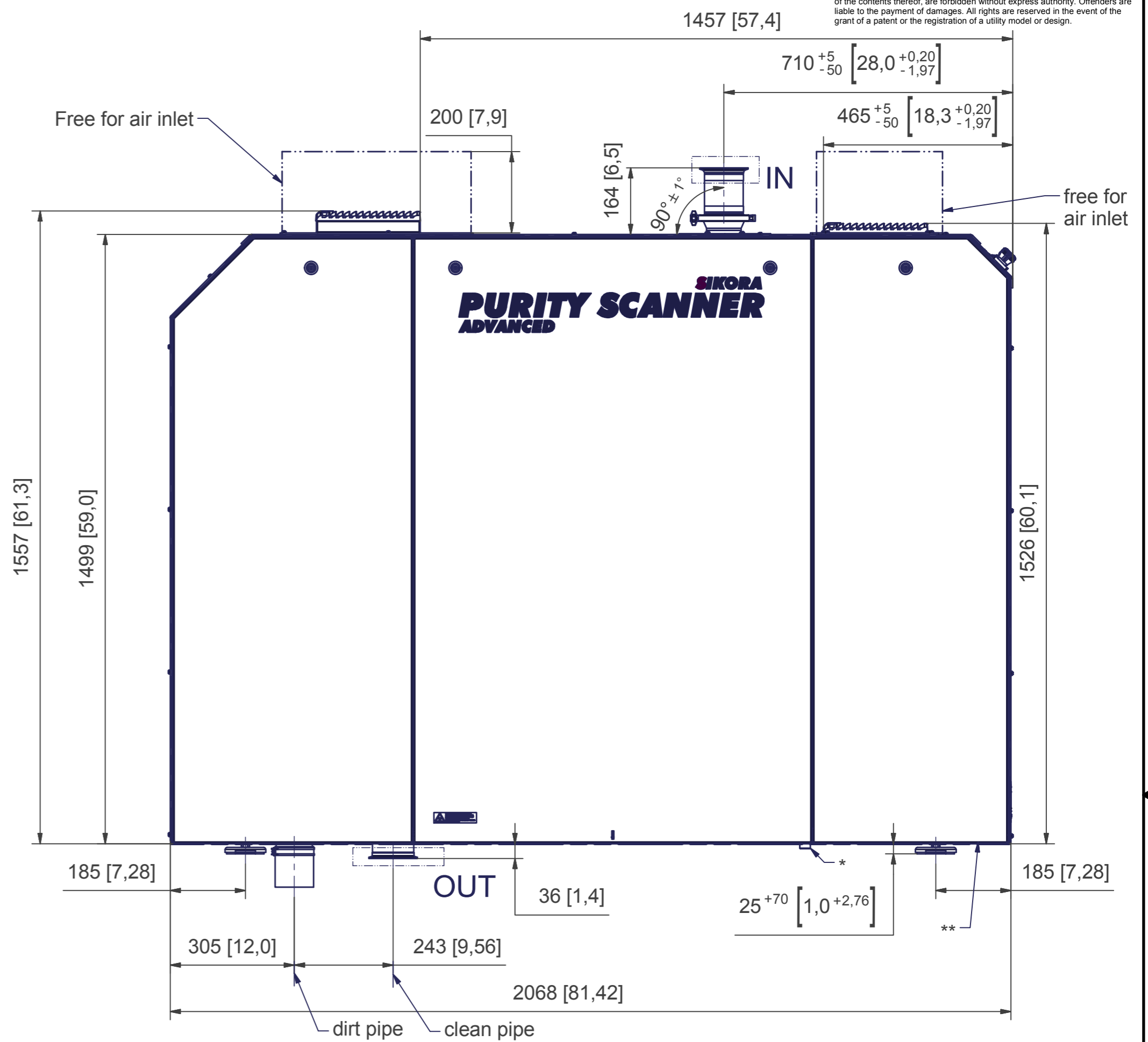
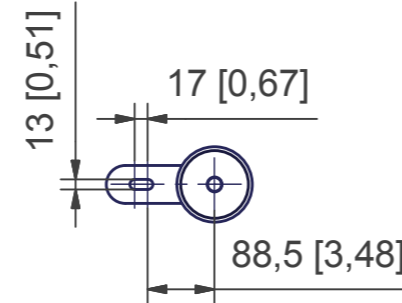
Option: Cooling system for Pellets < 45°C



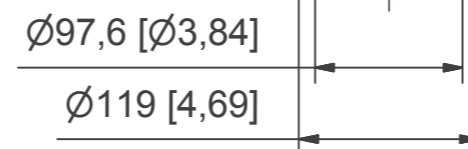
Front-, Top-, Back- and Bottomplate AlMgSi EQ

Option: Fine filter system

A (1 : 10)



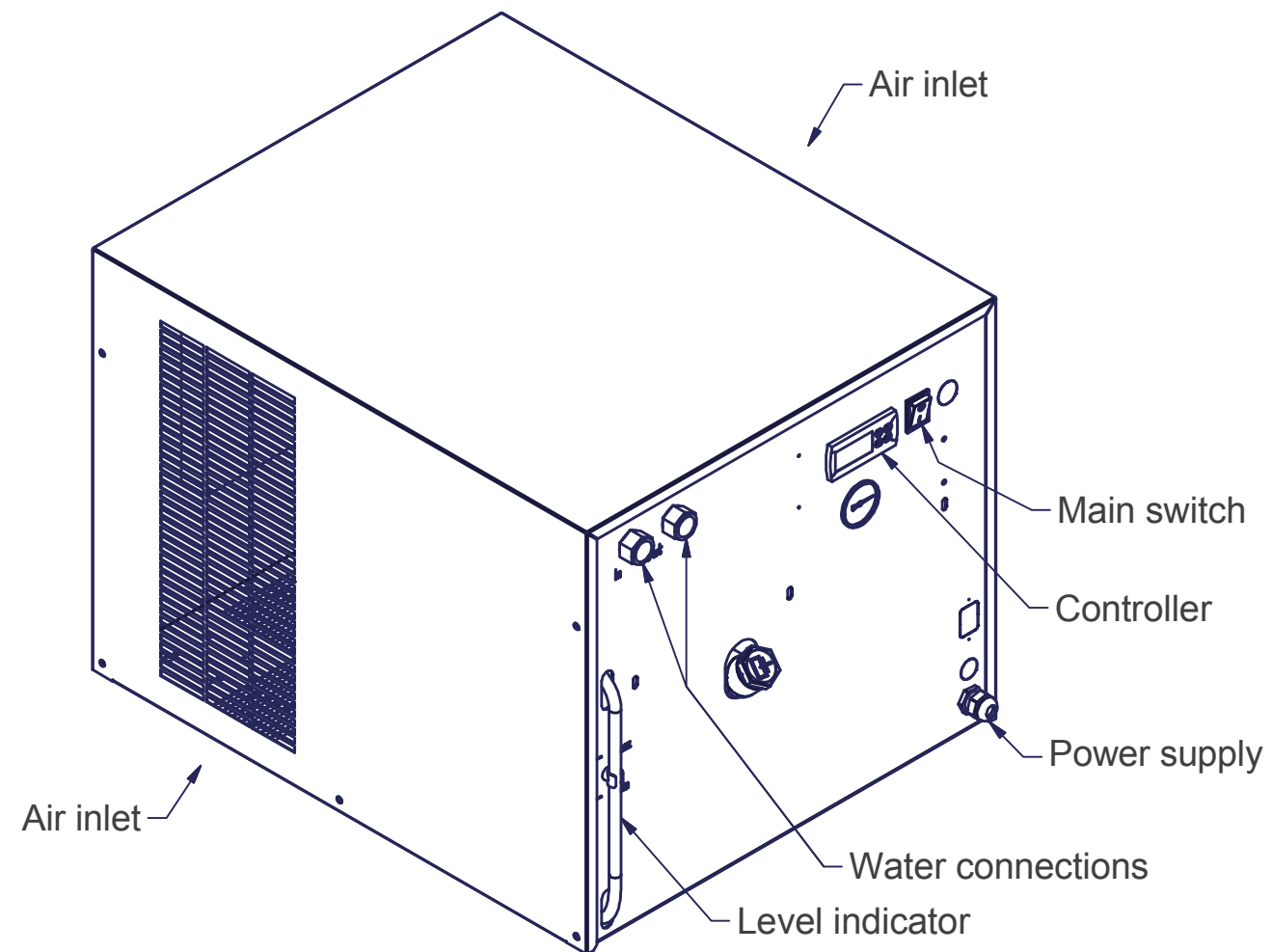
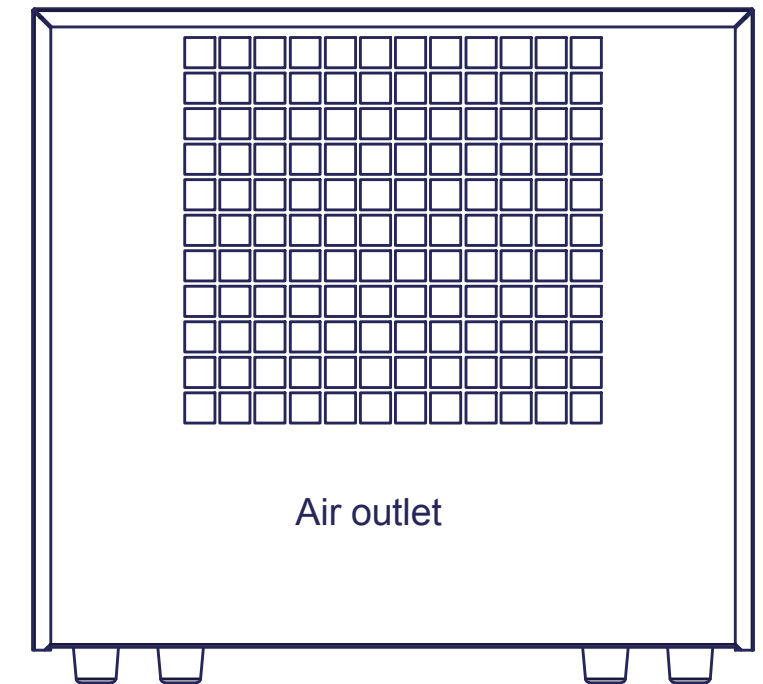
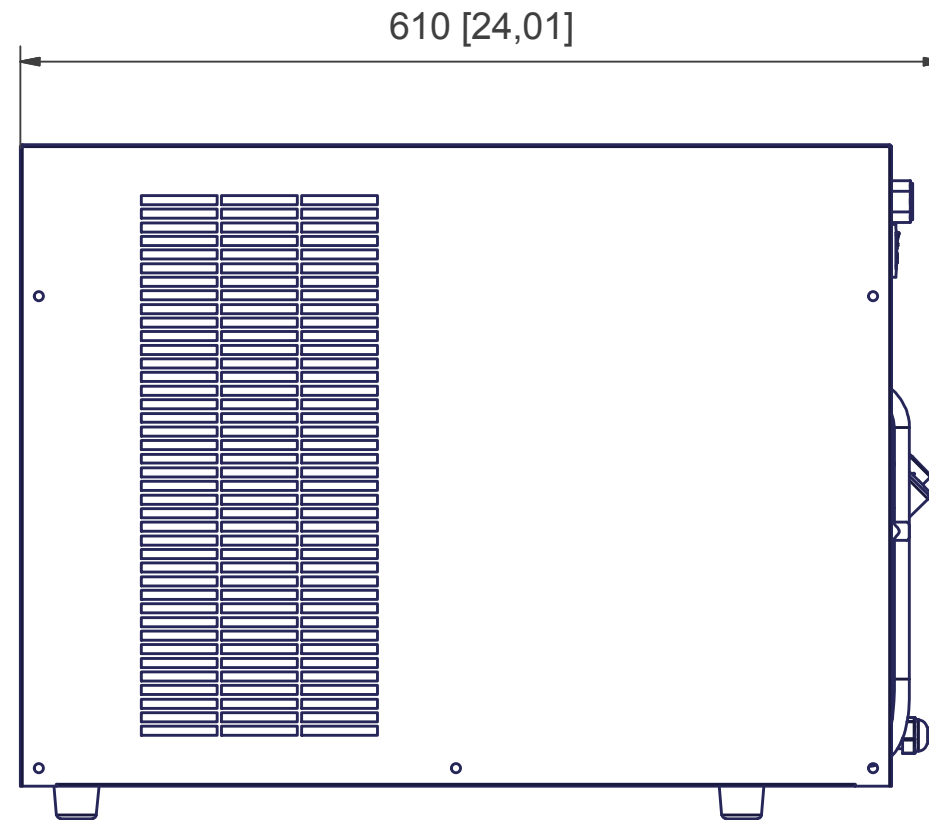
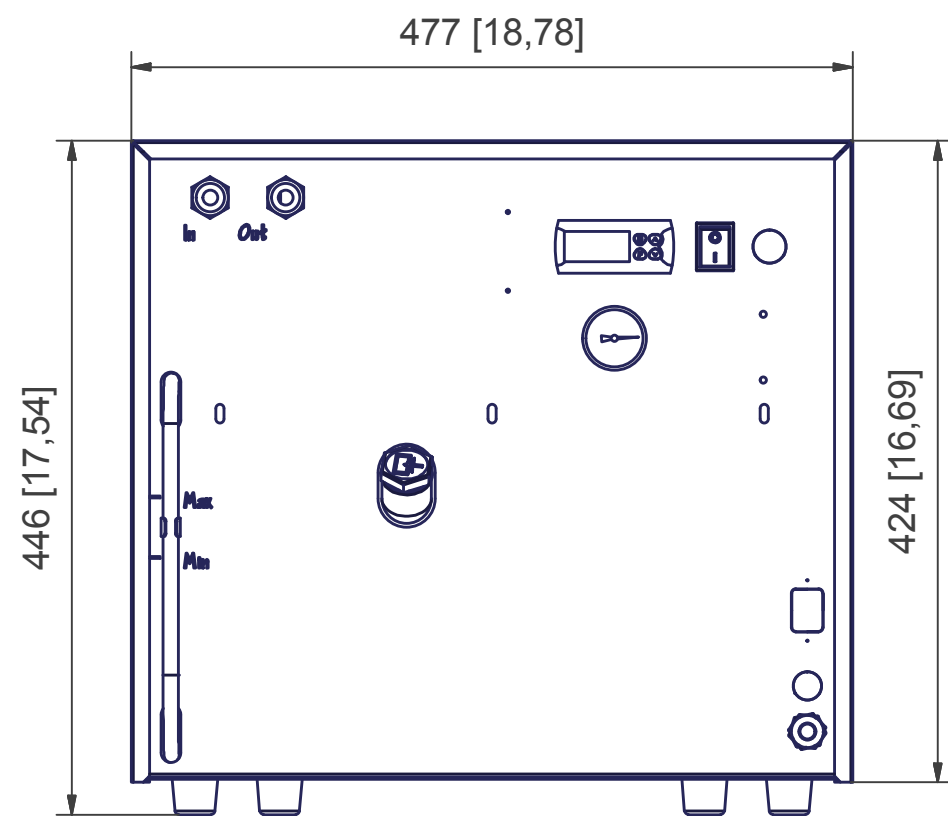
OUT (1 : 5)





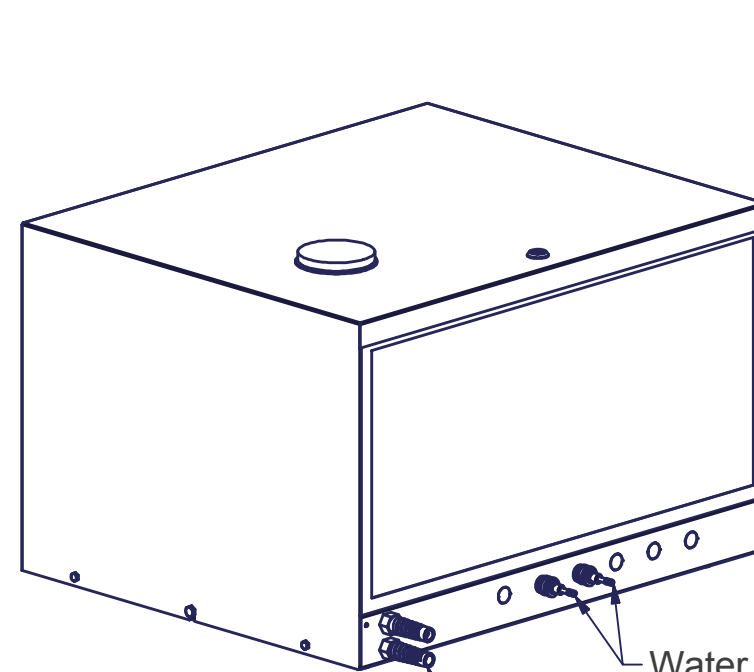
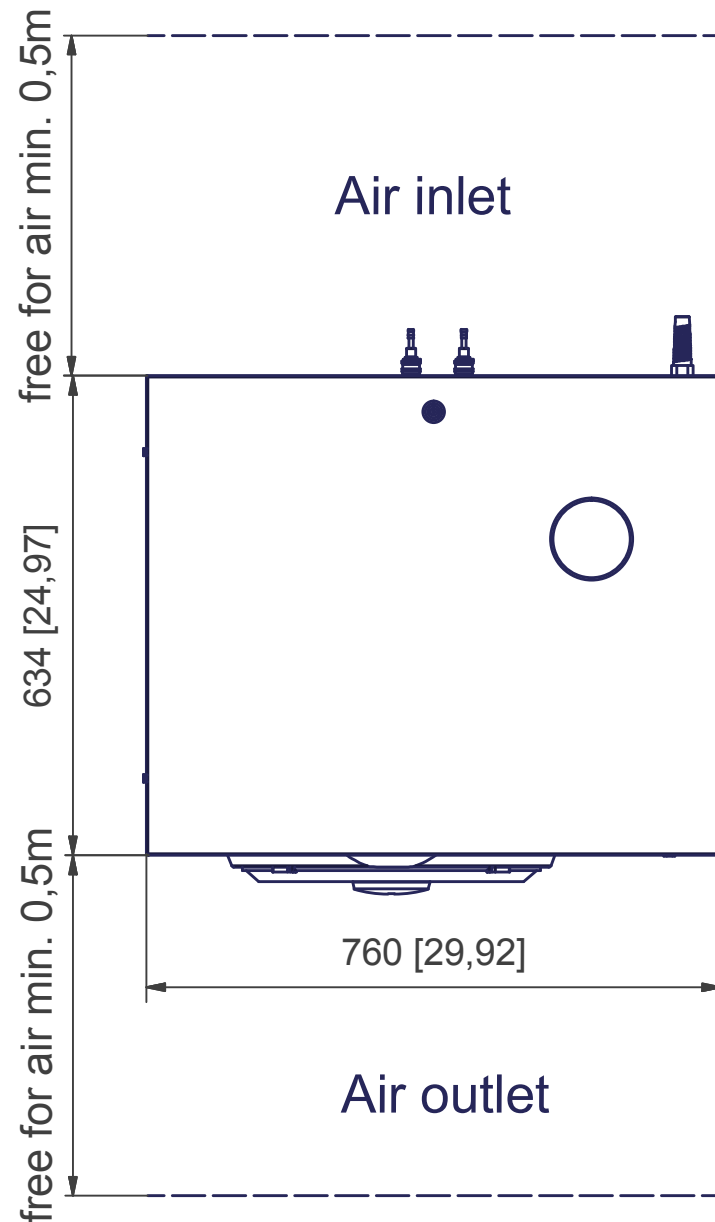
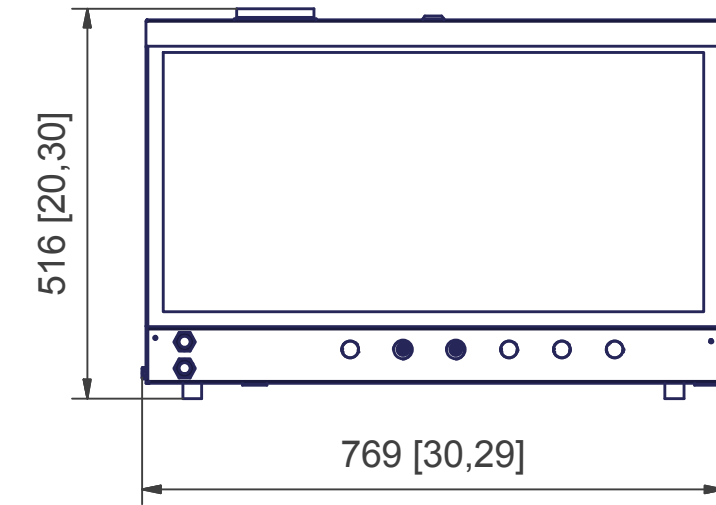
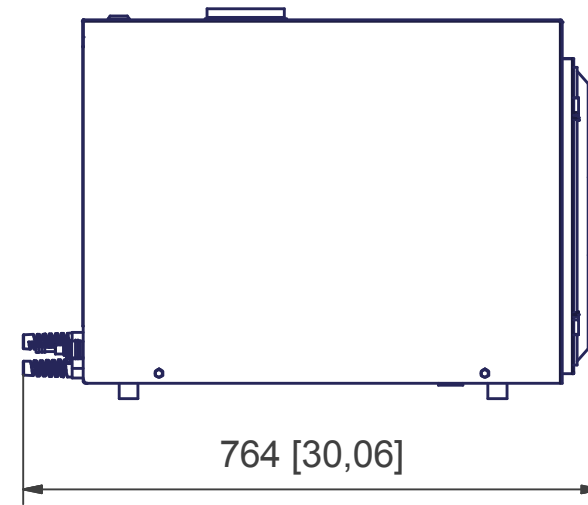
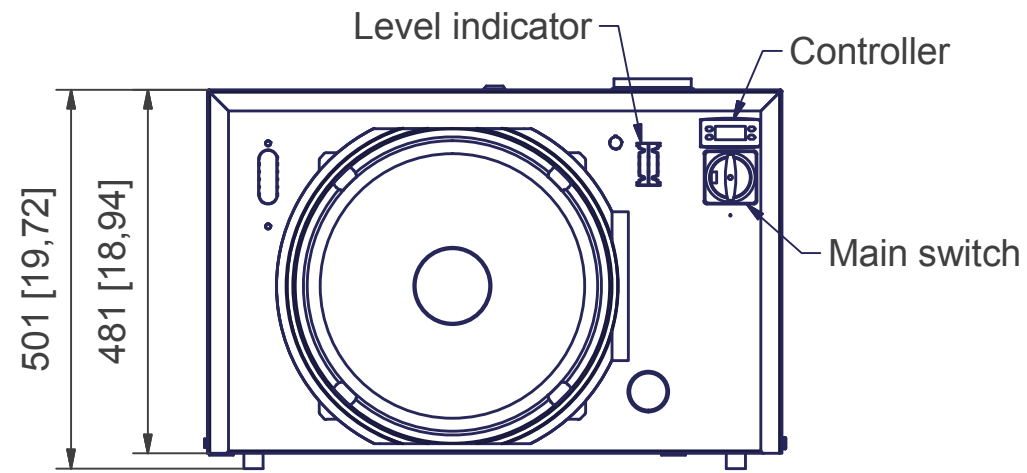
ISO2852
Nominal size 101,6

* Air: Connection with G 3/4" outside thread
Water: all fittings and hoses are delivered by sikora
** Connections for customer

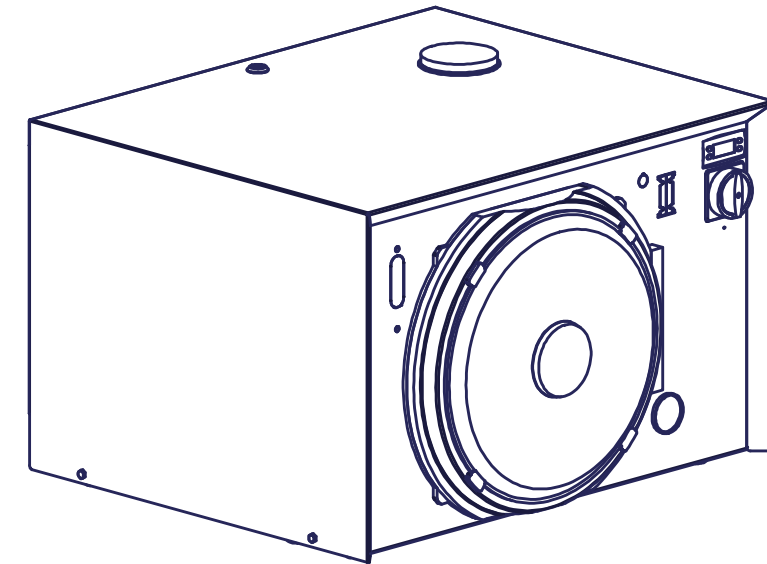
Identnummer / Part no.		Allgemeintoleranzen General tolerances ISO 2768-v L		Maßstab / Scale 1:10, 1:5	Gewicht / Weight 550 kg
		Date	Name	Benennung / Title	
		Drawn 23.01.2018	N.Bothmann	PURITY SCANNER ADVANCED Temperatur <45°C and >45°C	
		Checked		Zeichnungsnummer / Dwg no.	
		Approved		GS03	
		 SIKORA Technology To Perfection SIKORA AG Bruchweide 2 28307 Bremen Germany		Blatt / Sheet 1 / 3 Original size DINA2	
Rev.	Modification	Date	Name	File GS03 PURITY SCANNER_ADVANCED.idw	




Identnummer / Part no.		Allgemeintoleranzen General tolerances		Maßstab / Scale 1:5		Gewicht / Weighth 32 kg	
		ISO 2768-m K				Benennung / Title PURITY SCANNER ADVANCED Chiller for Pellets <45° with X-RAY	
	Date	Name					
	Drawn	23.01.2018 N.Bothmann					
	Checked						
	Approved			Zeichnungsnummer / Dwg no. GS03		Blatt / Sheet 2 / 3 Original size DIN A3	
 SIKORA AG Bruchweide 2 28307 Bremen Germany							



2,6kW max.
11A max.
16A
230V/50Hz



Identnummer / Part no.		Allgemeintoleranzen General tolerances		Maßstab / Scale 1:10		Gewicht / Weighth 90 kg	
		ISO 2768-m K				Benennung / Title PURITY SCANNER ADVANCED Chiller vor Pellets >45°	
	Date	Name					
	Drawn	23.01.2018 N.Bothmann					
	Checked						
	Approved			Zeichnungsnummer / Dwg no. GS03		Blatt / Sheet 3 / 3 Original size DIN A3	
		SIKORA Technology To Perfection SIKORA AG Bruchweide 2 28307 Bremen Germany					
Rev	Modification	Date	Name	File GS03 PURITY SCANNER_ADVANCED.idw		Rev.:	